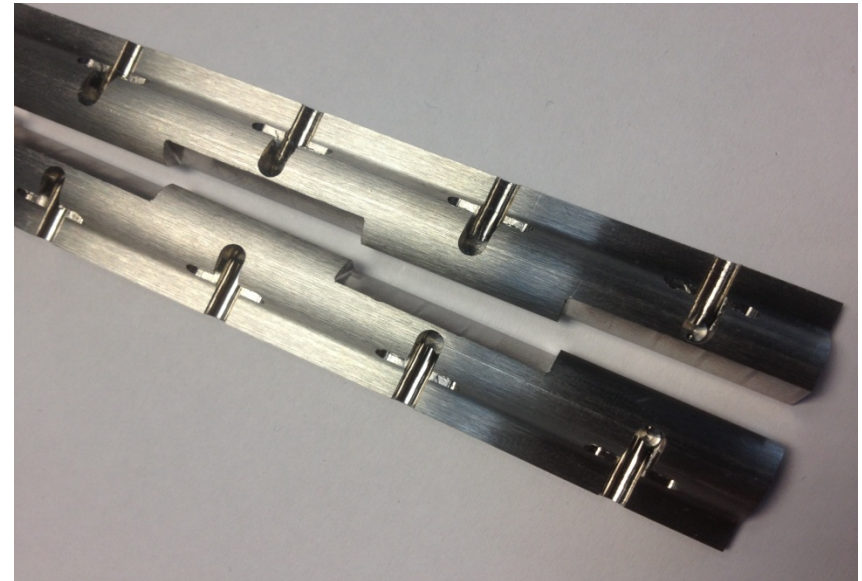
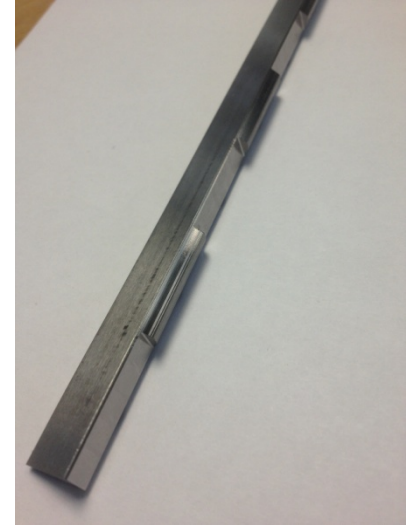
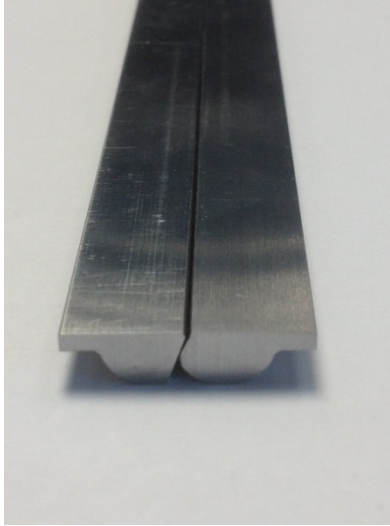


# Model #1 - Generation 7

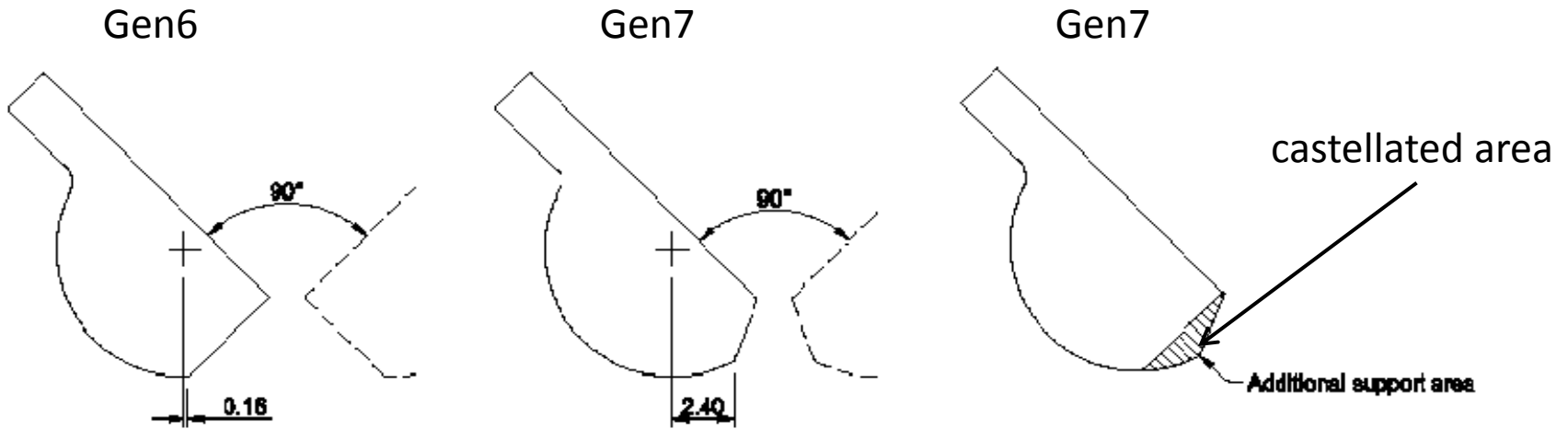
- Castellated inserts
- Fuller radius on saddle
- Increased number of springs
- Stronger springs
- New insert material – tougher thru' hardness
- Smoother spring rotation using dowel mount

# Gen7 castellated inserts



# Gen7 inserts - extra support from castellation

## Model 1 Rolla-V

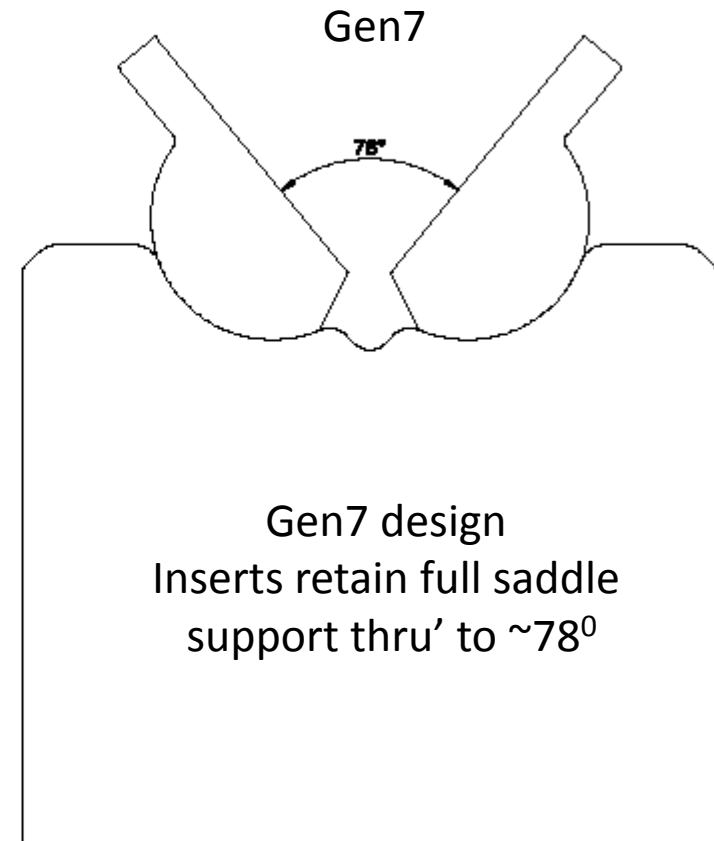
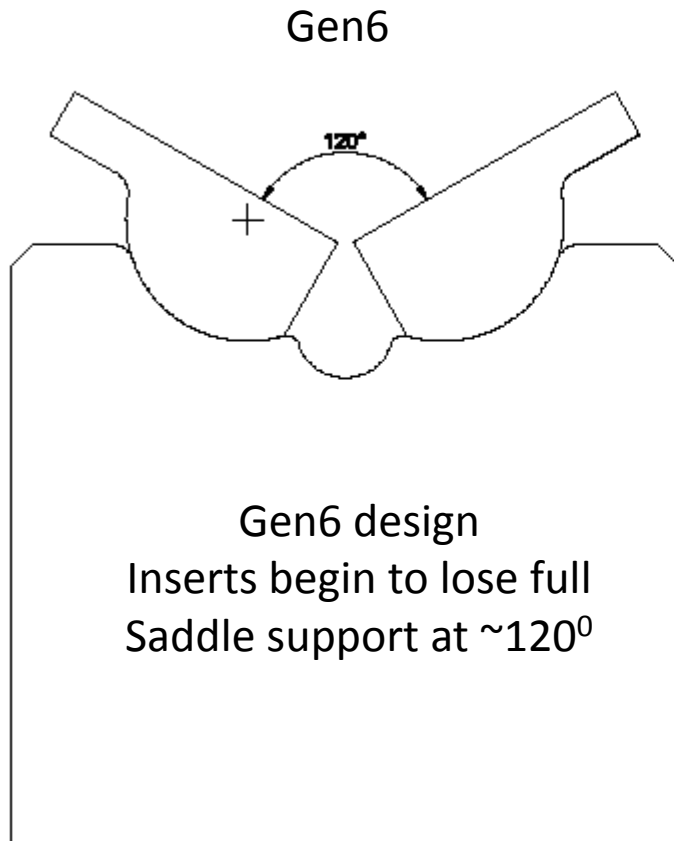


With Gen6 inserts at 90° bend angle the inserts were at 'tipping-point'

new Gen7 inserts provide full stability for insert at 90° bend angle – improved accuracy

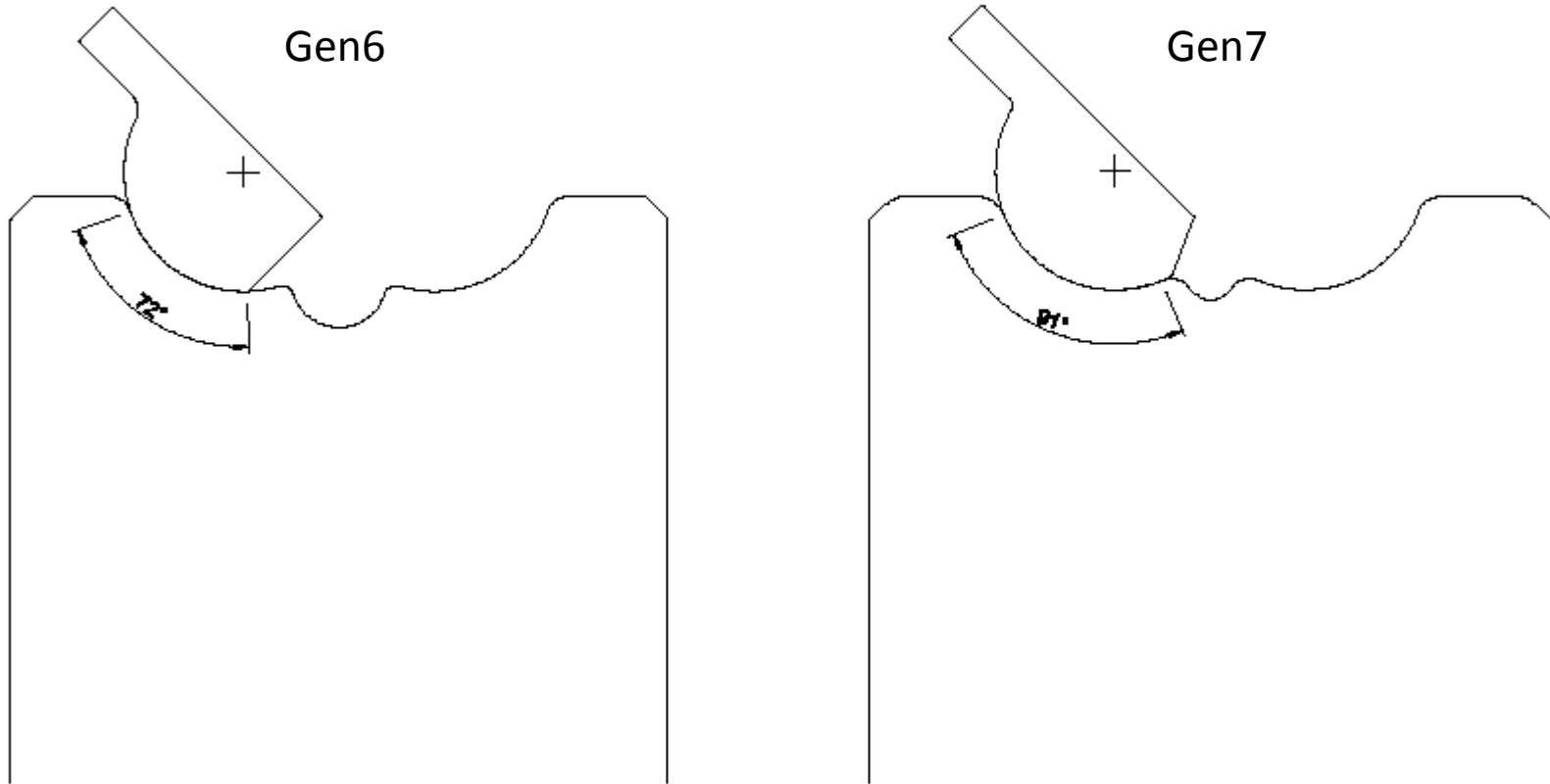
# Gen7 inserts - full saddle support angle

## Model 1 Rolla-V



# Gen 7 - saddle & insert offer 30% more support

## Model 1 Rolla-V



Combination of Gen7 castellated insert and redesigned Rotor provide 30% more support and contact area between insert and saddle when bend angle is  $90^\circ$  - this leads to far greater accuracy and repeatability



Tension-style springs provide much stronger force to help ensure insert remains in contact with saddle throughout the bend & improve angle accuracy and repeatability

Umbrella-style compression spring used in previous gen tools has limited strength and force