

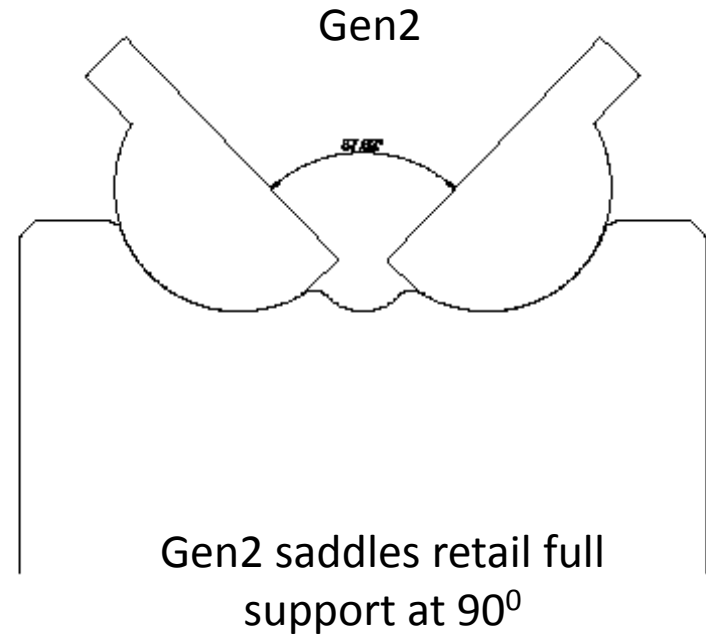
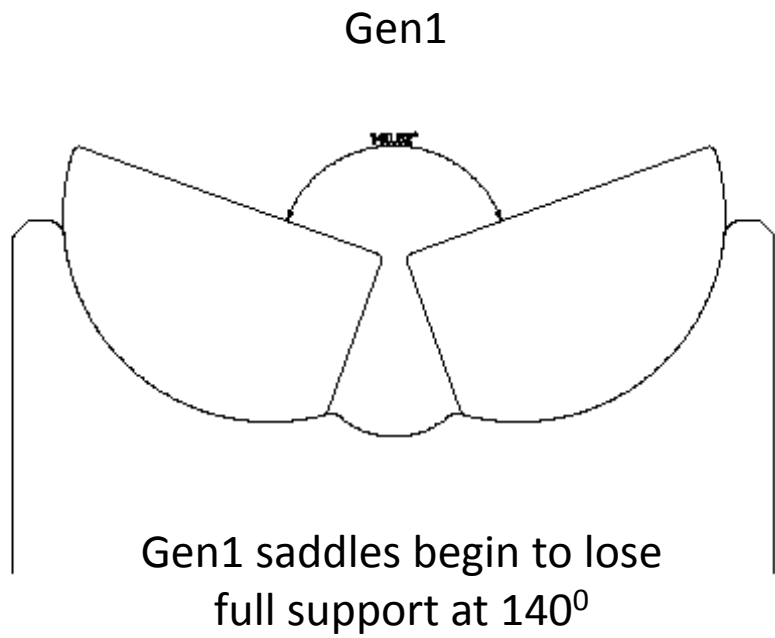


Model #2 - Generation 2

- 250mm inserts – no distortion
- Increased number of springs
- Stronger springs
- New insert material – tougher thru' hardness
- Smoother spring rotation using dowel mount

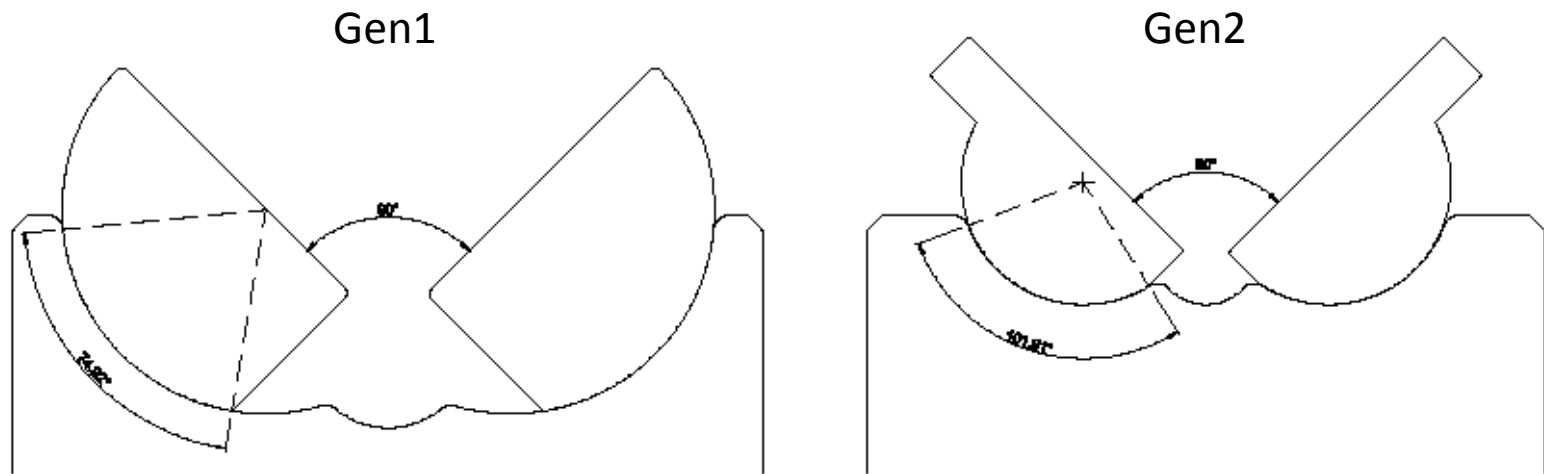
Gen 2 - saddle & insert offer full support at 90°

Model 2 Rolla-V



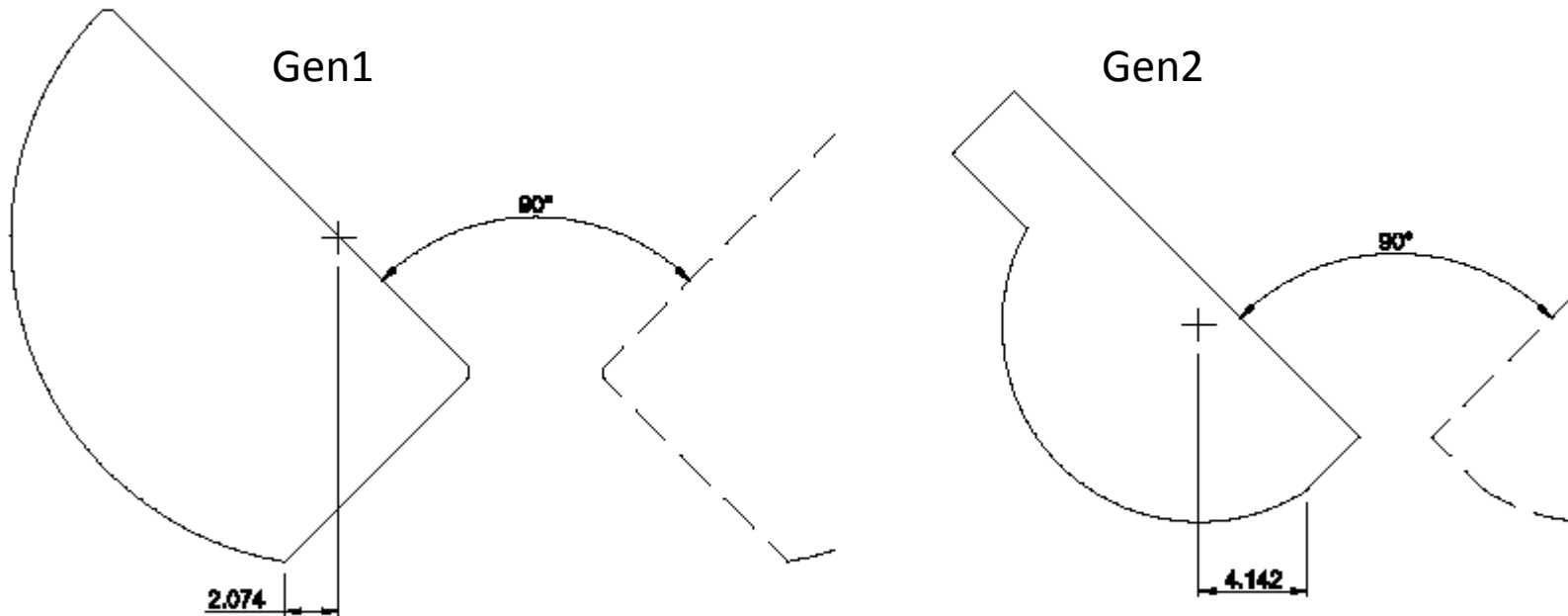
Gen 2 - saddle & insert offer 30% more support

Model 2 Rolla-V



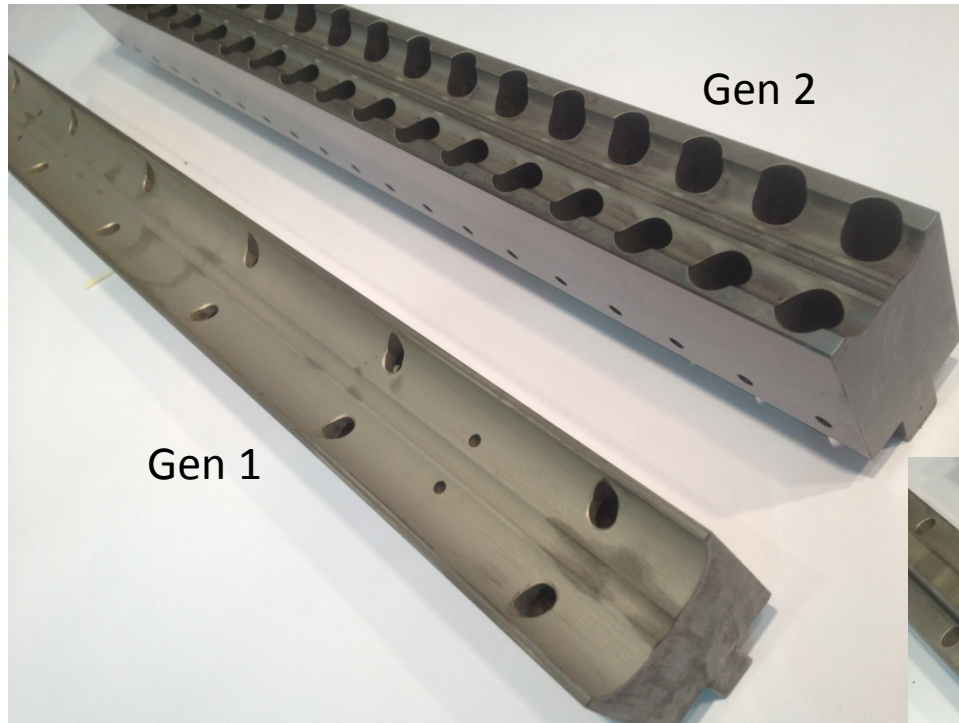
Gen2 insert and redesigned saddle provide 30% more radius support between insert and saddle when bend angle is 90° - this extra stability leads to far greater accuracy and repeatability

Model 2 Rolla-V

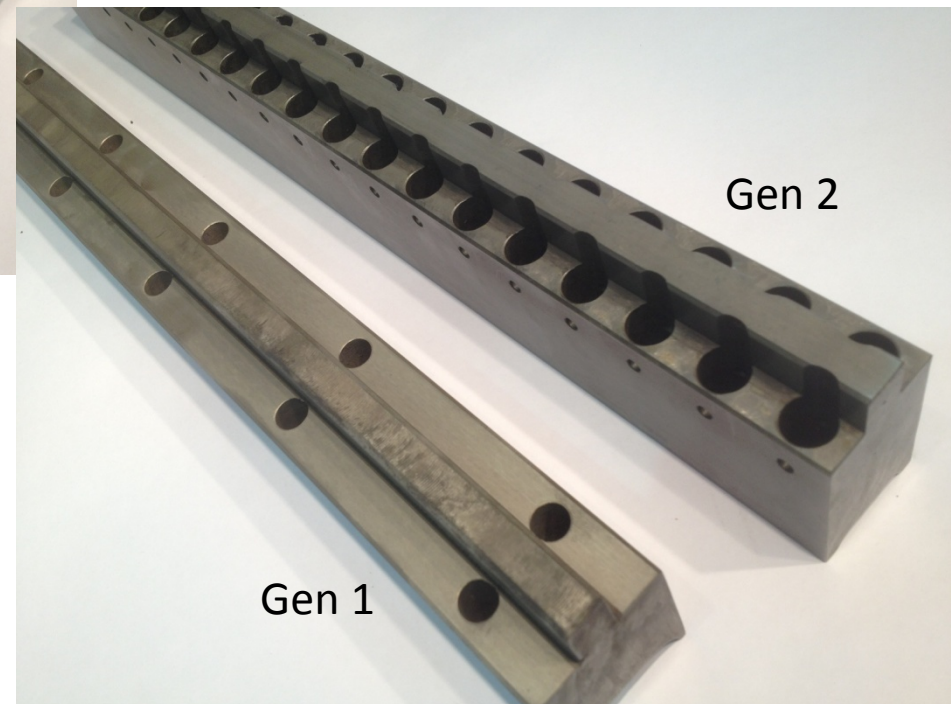


With Gen1 inserts at 90° bend angle the inserts are beyond 'tipping-point'
new Gen2 inserts provide full stability for insert at 90° bend angle – improved accuracy

Model#2 – Generation 2

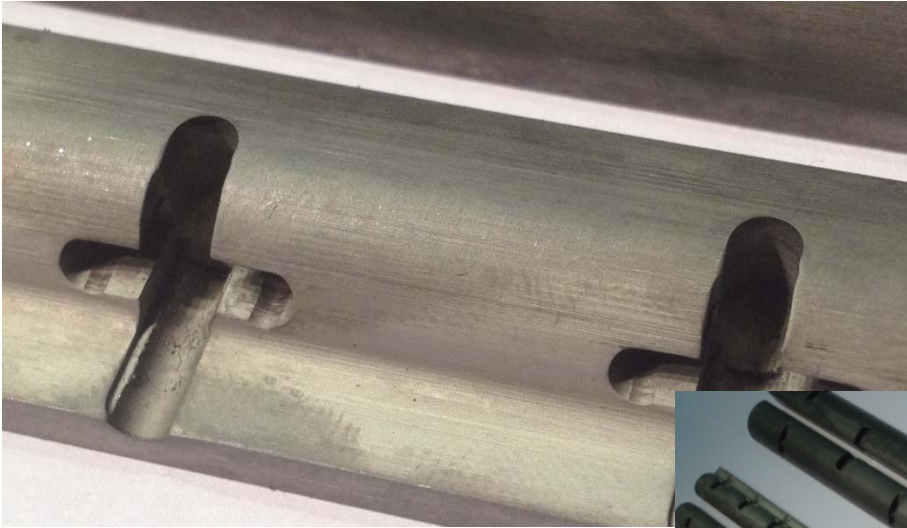


Insert retainer springs on Gen2 much stronger than Gen1 to ensure insert remains in contact with saddle during bending



Insert retainer springs increased from 12 springs per 500mm length to 40 springs per 500mm length

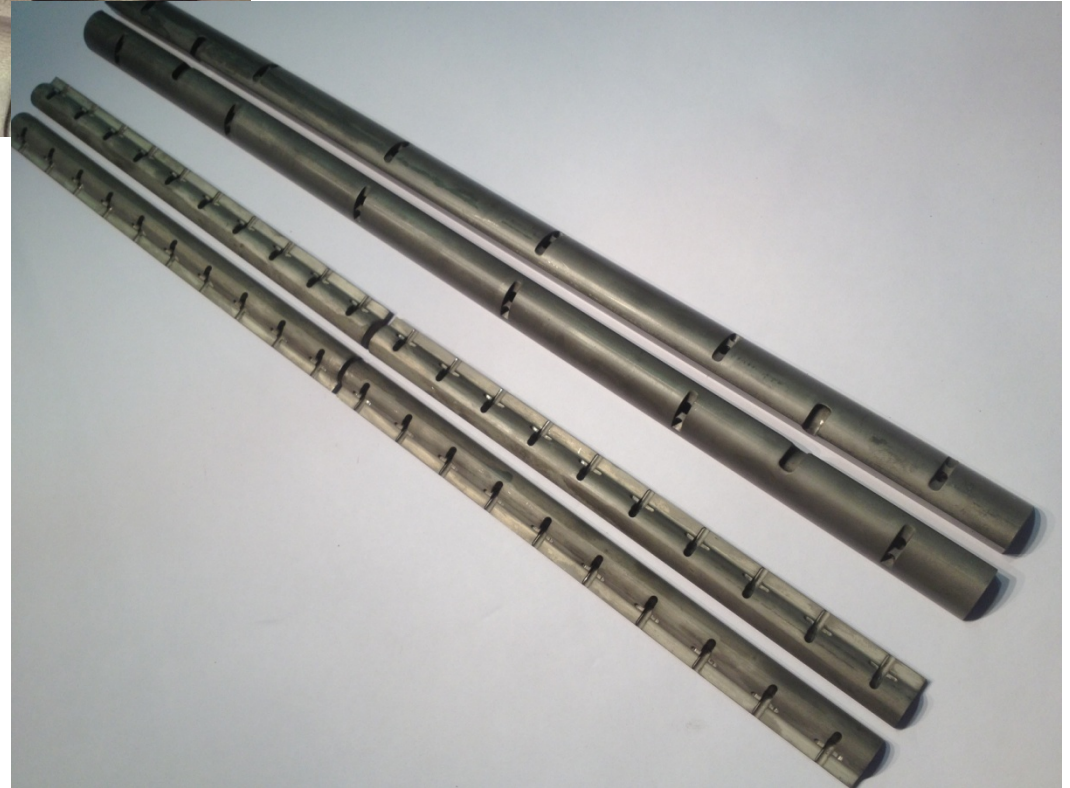
Model#2 Gen2 - insert detail



Gen2 inserts in 250mm lengths to ensure bow and twist are minimised (Gen1 insert was 500mm long)

Gen2 insert – springs hook around 2mm dowel located in insert allowing smooth rotation of inserts during bend

Gen2 insert material is P20-style tougher design – higher thru' hardness and nitride treated to high surface hardness



Model#2 Gen2 – stronger spring design

old-style model#2
umbrella type
compression spring
12 springs per 500mm tool



new-style model#2
tension type spring
40 springs per 500mm tool